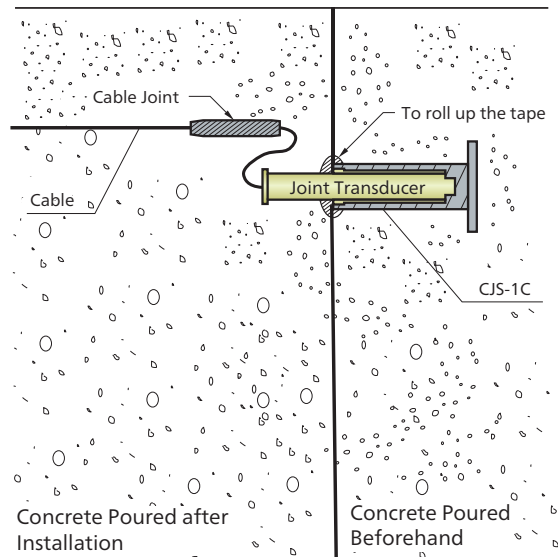


Suitable to check concrete blocks for opening at the joint.

- Suitable for checking an opening of concrete blocks at the joint or cracks initiated mainly by temperature change
- Mounting fixtures are available to measure an opening between a hydraulic pipe and backing concrete, as well as to use them as ordinary displacement transducers to check for deformation of blocks at dam monitoring areas or to detect displacement of rock-bed.
- For embedment in concrete, the dedicated receptacle CJS-1C is embedded in advance in a preceding block and the joint transducer is installed to the next block.

Embedded across a joint of adjacent concrete blocks, the BJ-AT series joint transducers measure an opening between blocks. A temperature measuring function enables simultaneous measurement of displacement and temperature. In addition, for measurement of cracks of concrete or rock-bed, a dedicated receptacle allows embedment in concrete and mounting legs or fixtures enable surface installation.

Application Example



- Displacement Measurement ● 5 to 50 mm
- With Temperature Measuring Function

Specifications

Performance

● Displacement Measurement	
Rated Capacity	See table below.
Nonlinearity	Within $\pm 1.5\%$ RO
Hysteresis	Within $\pm 1.5\%$ RO
Rated Output	1 mV/V or more tension + output
● Temperature Measurement	
Rated Capacity	-30 to 70°C
Measurement Error	$\pm 0.5^\circ\text{C}$ (-30 to 70°C)
(See page 7-32 for Small-sized Temperature Transducer BTS-100AT.)	

Environmental Characteristics

Safe Temperature	-30 to 80°C
Compensated Temperature	-20 to 70°C
Temperature Effect on Zero	Within $\pm 0.05\%$ RO/ $^\circ\text{C}$
Temperature Effect on Output	Within $\pm 0.05\%$ / $^\circ\text{C}$

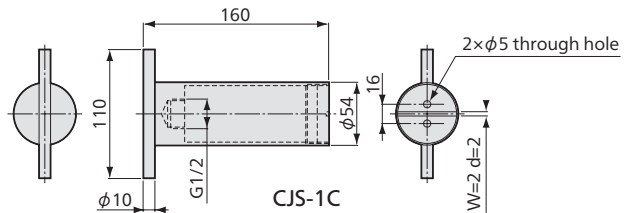
Electrical Characteristics

Safe Excitation	10 V AC or DC
Recommended Excitation	2 to 10 V AC or DC
Input Resistance	350 Ω $\pm 1\%$ at 0°C
Output Resistance	450 Ω $\pm 0.8\%$ at 0°C
Cable	4-conductor (0.5 mm ²) chloroprene shielded cable, 11.5 mm diameter by 1 m long, bared at the tip

Mechanical Properties

Safe Overloads	120%
Weight	Approx. 790 g

Optional Accessories Dedicated receptacle CJS-1C

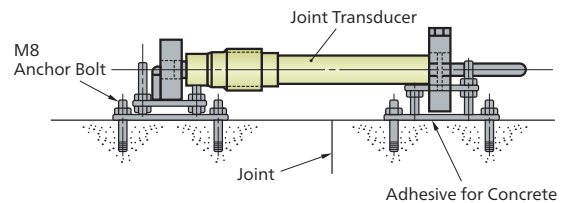


*For surface installation and various mounting fixtures, contact Kyowa sales representative.

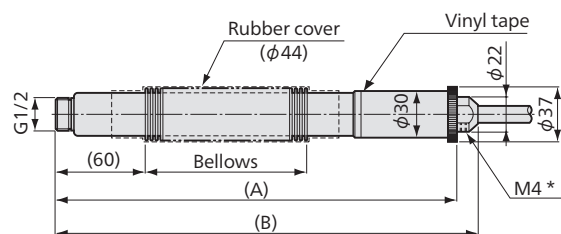
*For ordinary displacement transducers, see pages 2-149 to 2-163.

Models	Rated Capacity (Displacement)	A (Approx.)	B (Approx.)	Bellows (Approx.)
BJ-5AT	5 mm	260	275	25
BJ-10AT	10 mm			
BJ-20AT	20 mm	260	275	50
BJ-50AT	50 mm	270	285	100

Cross Section of Installation



Dimensions



*For grounding of lightning arrester kit.

