

BER-S-79SA1

● Pressure Measurement
● 500 kPa to 3 MPa

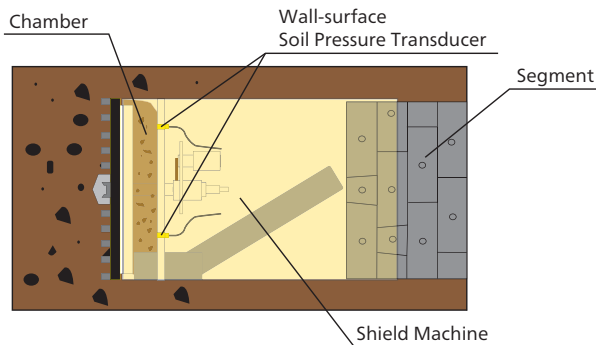
Wall-surface Soil Pressure Transducer



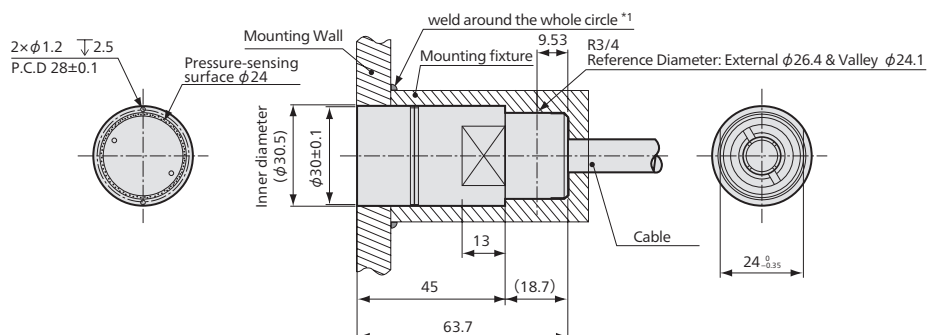
With a stopper, enables to support overload of 1000%

- Outstanding 1000% overload
- Support of 1000% overload against eccentric loads (With a stopper)
- Excellent characteristics against eccentric load (Little change in sensitivity and others)

Application Example



Dimensions



Note:
Do not weld the transducer when the mounting fixture fixed on.

Specifications

Performance

Rated Capacity	See table below.
Nonlinearity	Within ±2% RO
Hysteresis	Within ±2% RO
Rated Output	Approx. 1.5 mV/V

Environmental Characteristics

Safe Temperature	-30 to 80°C
Compensated Temperature	0 to 70°C
Temperature Effect on Zero	Within ±0.1% RO/°C
Temperature Effect on Output	Within ±0.1% /°C

Electrical Characteristics

Safe Excitation	12 V AC or DC
Recommended Excitation	1 to 10 V AC or DC
Input Resistance	350 Ω ±2%
Output Resistance	350 Ω ±2%
Cable	4-conductor (0.5 mm ²) chloroprene shielded cable, 10 mm diameter by 30 m long, bared at the tip (Shield is not connected to the case.)

Mechanical Properties

Safe Overloads	1000% soil pressure (Powdered & pore pressure) And the pore pressure (Liquid & gas pressure) is 3 MPa.
Material	Stainless steel metallic finish
Water Resistance (Cable outlet)	600 kPa
Weight	Approx. 230 g (Excluding cable)

Models	Rated Capacity	Calculated Loads
BER-S-500KP79SA1	500 kPa	230 N
BER-S-1MP79SA1	1 MPa	460 N
BER-S-2MP79SA1	2 MPa	910 N
BER-S-3MP79SA1	3 MPa	1360 N

*For pressure measurement of pulverulent bodies φ3 mm or less (Powdered & pore pressure)

