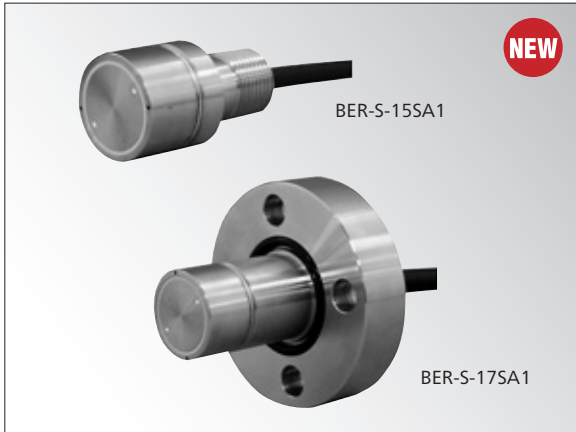


# BER-S-15SA1/17SA1

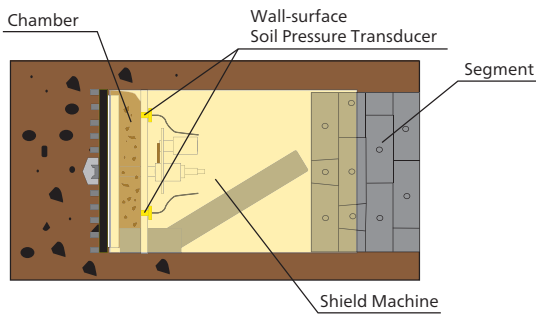
## Wall-surface Soil Pressure Transducer



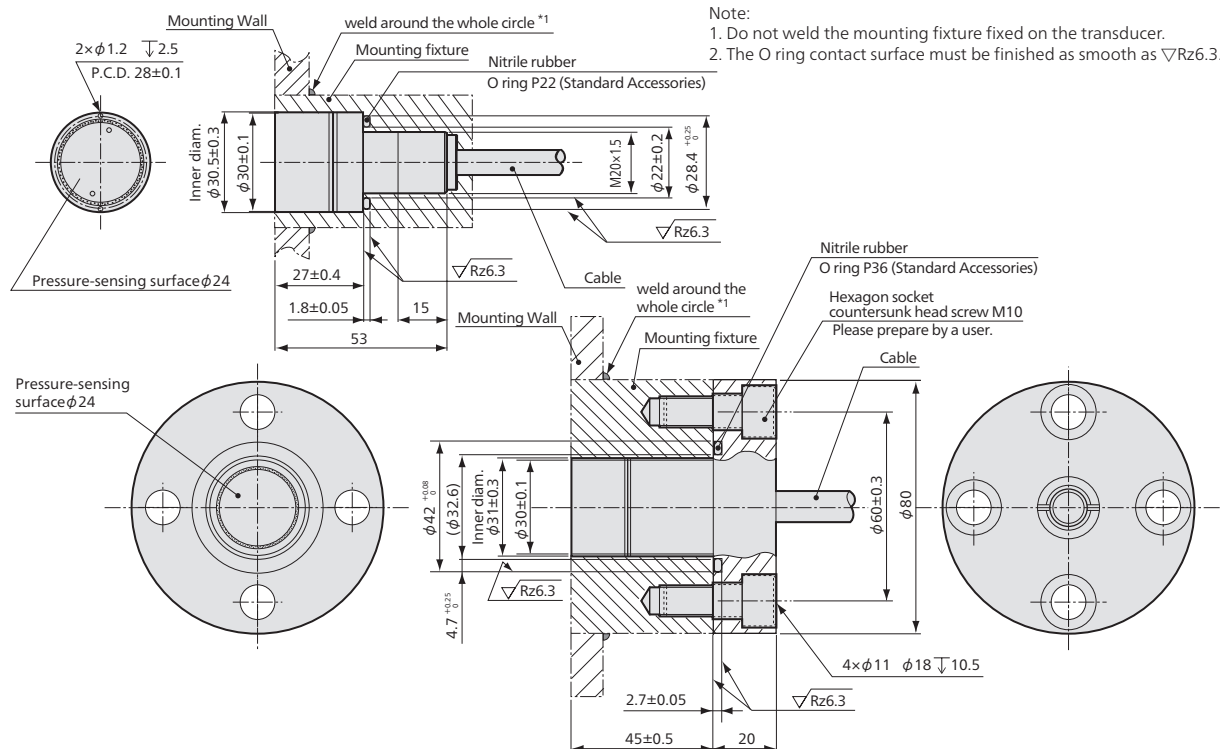
**With a stopper, enables to support overload of 1000%**

- Outstanding 1000% overload
- Regular capacity models are available
- Support of 1000% overload against eccentric loads (With a stopper)

**Application Example**



**Dimensions**



**Specifications**

- Pressure Measurement
- 500 kPa to 3 MPa

**Performance**

Rated Capacity	See table below.
Nonlinearity	Within ±2% RO
Hysteresis	Within ±2% RO
Rated Output	Approx. 1.5 mV/V

**Environmental Characteristics**

Safe Temperature	-30 to 80°C
Compensated Temperature	0 to 70°C
Temperature Effect on Zero	Within ±0.1% RO/°C
Temperature Effect on Output	Within ±0.1%/°C

**Electrical Characteristics**

Safe Excitation	12 V AC or DC
Recommended Excitation	1 to 10 V AC or DC
Input Resistance	350 Ω ±2%
Output Resistance	350 Ω ±2%
Cable	4-conductor (0.3 mm <sup>2</sup> for 15SA1, 0.5 mm <sup>2</sup> for 17SA1) chloroprene shielded cable, 8 mm (17SA1: 10 mm) diameter by 30 m long, bared at the tip (Shield is not connected to the case.)

**Mechanical Properties**

Safe Overloads	1000% soil pressure (Powdered & pore pressure) And the pore pressure (Liquid & gas pressure) is 3 MPa.
Material	Stainless steel metallic finish
Water Resistance (Cable outlet)	600 kPa
Weight	150 g (15SA1, excluding cable) 800 g (17SA1, excluding cable)

Models	Rated Capacity	Calculated Loads
BER-S-500KP15SA1	500 kPa	230 N
BER-S-1MP15SA1	1 MPa	460 N
BER-S-2MP15SA1	2 MPa	910 N
BER-S-3MP15SA1	3 MPa	1360 N
BER-S-500KP17SA1	500 kPa	236 N
BER-S-1MP17SA1	1 MPa	460 N
BER-S-2MP17SA1	2 MPa	910 N
BER-S-3MP17SA1	3 MPa	1360 N

\*For pressure measurement of pulverulent bodies φ3 mm or less (Powdered & pore pressure)

- Note:
1. Do not weld the mounting fixture fixed on the transducer.
  2. The O ring contact surface must be finished as smooth as ∇Rz6.3.

